

one park grove



Magnificent Architecture.
Spectacular Views.
Extraordinary Lifestyle.



Artist Conceptual Rendering. See Disclaimers Page.

Introducing the magnificent waterfront homes of One Park Grove — estate quality residences and penthouses with the perfect location, stunning architecture, spectacular views and a richly-layered lifestyle.

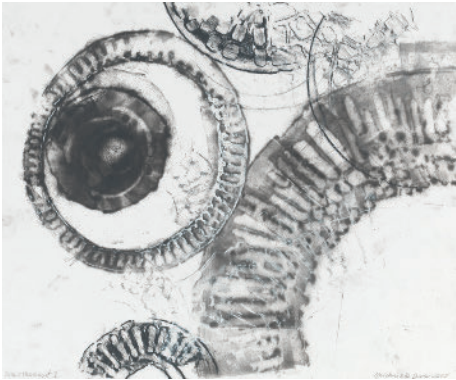


Artist Conceptual Rendering. See Disclaimers Page.

contents



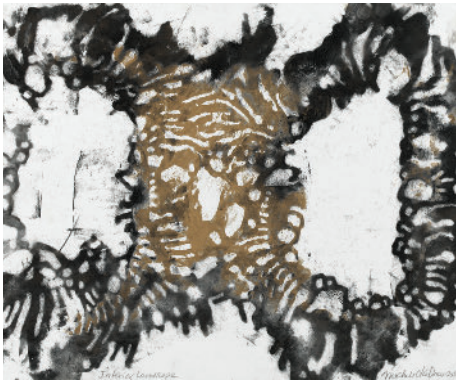
INTRODUCTION, PAGE 8



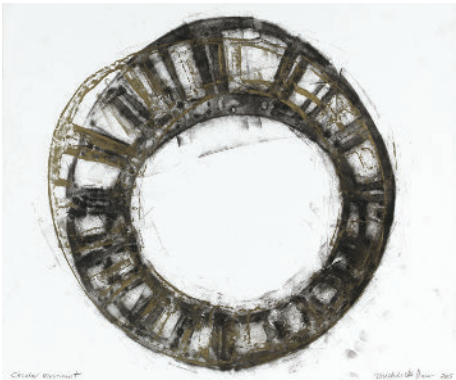
ARCHITECTURE, PAGE 18



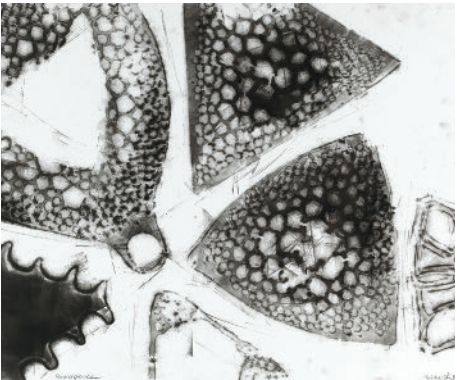
INTERIORS, PAGE 26



LANDSCAPE, PAGE 34



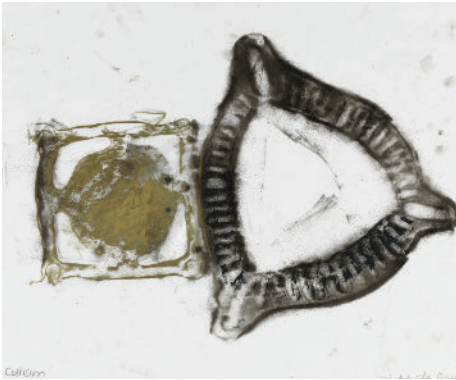
LIFESTYLE, PAGE 40



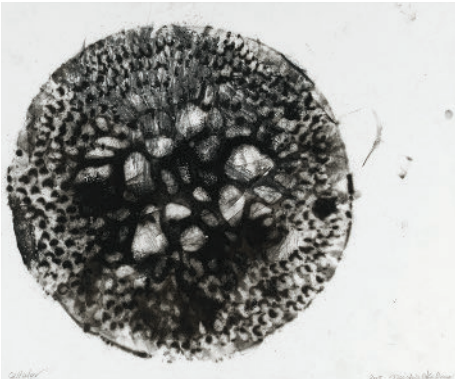
DEVELOPMENT TEAM, PAGE 44



VIEWS, PAGE 50



RESIDENCES, PAGE 64



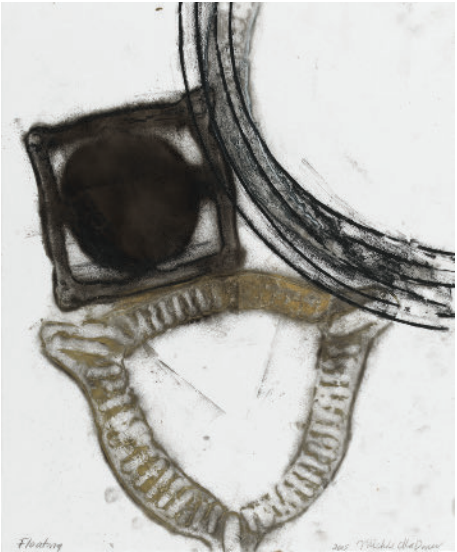
AMENITIES, PAGE 90



ART, PAGE 126



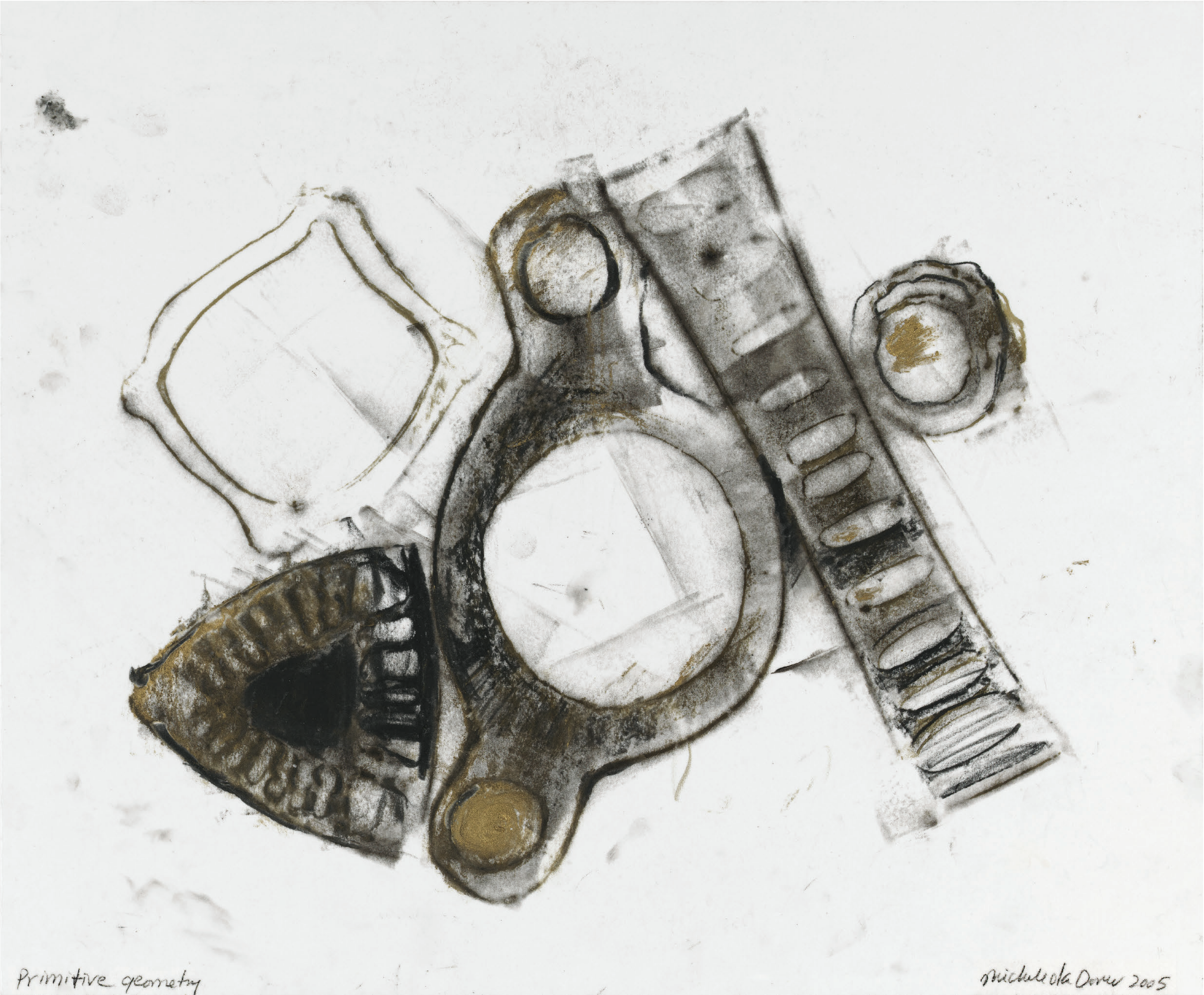
COCONUT GROVE PARKS, PAGE 138



CREDITS, PAGE 148

Michele Oka Doner, 2005
Oil stick and printers ink on
vellum

introduction



the grove
miami’s first
neighborhood

A place of soul and community, Coconut Grove has long been the spiritual center of Miami. When Miami’s first settlers set foot on the pristine shores of Coconut Grove, they knew they found the ultimate homestead. Here, they’d discovered a landscape that was abundant in natural resources (freshwater springs, arable land) and astounding in its lush tropical beauty. Coconut Grove offered an unrivaled trifecta: a wild and verdant landscape, the clear-blue waters of Biscayne Bay, and year-round sunlight and warmth. In 1825, Coconut Grove became Florida’s first official settlement, and the area has been considered the soul of Miami ever since.

During the nineteenth century, the population of Coconut Grove slowly grew. In 1882, English immigrants Isabella and Charles Peacock opened the area’s first hotel, the Bay View Inn (later renamed the Peacock Inn). With this institution firmly established, Coconut Grove became a destination for visitors, and it soon gained a reputation as an idyllic haven where life was both dynamic and relaxed, prosperous and simple. In 1887, yacht designer Ralph Middleton Munroe founded the Biscayne Bay Yacht Club, naming himself Commodore. Though it had long been a hub for mariners, Coconut Grove was now a center of recreational yachting and a known epicenter of the nautical life.

Around this time, Coconut Grove’s first families were also planning and building grand waterfront estates, some of which still exist to this day. Munroe’s house, for example, was built in 1891 and still stands in Barnacle Historic State Park, a five-acre park in the heart of Coconut Grove. In 1896, the Florida East Coast Railway was extended to Miami, bringing with it new resources and unprecedented wealth. The gilded age saw the arrival of new residents, many of whom built impressive homes around the bay. One such estate is Vizcaya (now known as the Vizcaya Museum and Gardens), which was the home of businessman James Deering. Originally set on 180 acres, the villa was primarily built between 1914 and 1922 — although its stunning Italian Renaissance gardens were not completed until 1923.

During this age of prosperity, Coconut Grove entered the national spotlight for an entirely different reason. With the United States entry into World War I in 1917, Dinner Key (located in the bay off Coconut Grove) became the site of one of the country’s first naval air stations. A significant portion of American aviators were trained here, and suddenly, ever-serene Coconut Grove became a center of technology and progress. In the years following the war, the station at Dinner Key became a seaplane hub for Pan American Airways, the world’s most important airline at the time.

In 1925, Miami officially annexed Coconut Grove, a controversial decision that was opposed by many longtime residents of the Grove. But despite this official annexation, Coconut Grove retained its relaxed culture and “separatist” spirit. Though it was — and still is — one of Miami’s most recognizable and cherished neighborhoods, the Grove has always had a culture unto itself, distinct from that of the fast-growing metropolis to the north. It was precisely this spirit and mindset — relaxed, open minded, creative — that attracted some of the world’s most lauded artists, writers, and creators during the middle part of the twentieth century. Though the Grove was well established as a retreat for wealthy tycoons, it was also a welcoming hideaway for creative people who wished to inhabit a leafy, private



world where they could work and live at their own pace. Dozens of American legends took up residence here at some point. Among them were painter John Singer Sargent, poet Robert Frost, playwright Tennessee Williams, and singer Joni Mitchell. This influx of talent left an indelible mark on Coconut Grove. To this day, it remains a place where tolerance, creativity, and free-thinking are hallmarks of the community. Each year, myriad parades, art festivals, and parties are held here, keeping the celebratory spirit of the Grove alive.

Today, nearly 200 years since it was first settled, Coconut Grove remains an idyllic homestead, a place where diverse residents have found their paradise amidst leafy palms and turquoise waters. The Grove is a place of rare balance, where the highest of luxury living commingles with a relaxed, bohemian attitude. Given this inimitable legacy and the area's unrivaled beauty, the Grove is undeniably the soul of Miami.



The renaissance of Miami’s most established and vibrant community. One Park Grove strikes the perfect balance between access to and escape from Miami. Coconut Grove has long been known as Miami’s most idyllic, dynamic, and historic neighborhood — one that generations of cultural icons have called home. Today, residents of One Park Grove are the inheritors of this rich legacy. Here, the best of upscale living—yachting, high culture, a vibrant society—meets an easy artistic sensibility. Though it’s located just seven miles from downtown Miami, Coconut Grove represents a peaceful retreat from what has become the country’s most cosmopolitan city. This rare balance between access and escape is one of the many factors that distinguish modern life in the Grove. Coconut Grove is indeed a serene hideaway, but it’s also a welcoming home. The area is known for its world-class schools: There are seven private schools in the neighborhood, the oldest of which dates back to 1903. In addition to having access to elite education, residents of Coconut Grove are surrounded by stunning natural beauty. The enclave boasts 16 picturesque parks. Among these is the Kampong, an 11- acre tropical garden that was originally the home of famed horticulturalist Dr. David Fairchild in the early twentieth century. Other cultural destinations include the charming Vizcaya Museum and Gardens, the Barnacle Historic State Park, and the famed Coconut Grove Playhouse. The storied enclave of Coconut Grove also has a rich tradition of hosting cultural and artistic events. Each year, the larger Miami community comes together for an array of outdoor festivals and celebrations that take place here. The most prominent of these is the Coconut Grove Arts Festival, but the Great Taste of the Grove Food & Wine Festival and the Goombay Festival (a Bahamian carnival) are highly anticipated events as well.

Within the village of Coconut Grove, outdoor cafés and restaurants line the streets, and residents have access to some of Miami’s best shopping. In addition to numerous local boutiques, the neighborhood is home to two open-air malls, CocoWalk and Streets of Mayfair. Given its diverse cultural offerings, unmatched natural beauty, and unique lifestyle balance, Coconut Grove provides an ideal environment for families to put down lasting roots and take their place in the area’s evolving story.



Artist Conceptual Rendering. See Disclaimers Page.

a life aquatic
the grove’s
nautical frontier

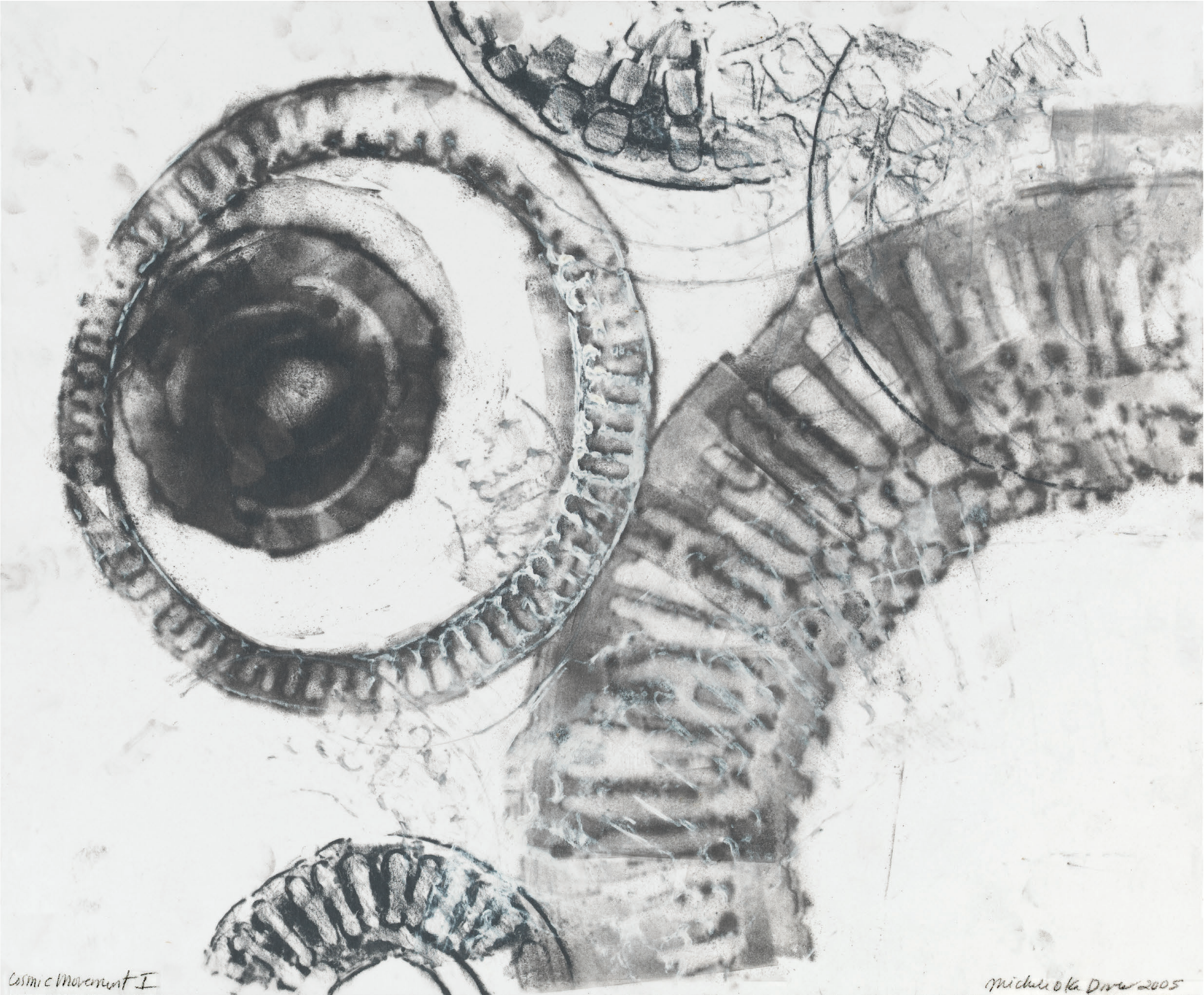
Coconut Grove’s rich maritime history still informs modern-day life at One Park Grove, where the sea is a natural extension of home. Residents of Coconut Grove have long enjoyed a deep and enduring connection to the seascape around them. In this community, residences overlook the water, children grow up on the decks of sailboats, and the most memorable parties take place at sea. In Coconut Grove, spending time on the water is not merely an activity — it’s a way of life.

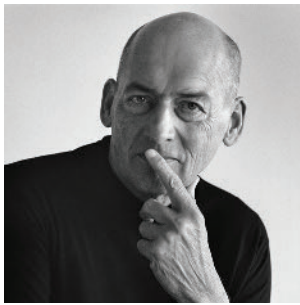
Given One Park Grove’s privileged position just steps from Biscayne Bay, life here represents the ultimate nexus of the city and the sea. The nearby Coconut Grove Sailing Club, the Coral Reef Yacht Club, and the Dinner Key Marina all offer access to the water and to the area’s vibrant boating culture. In Coconut Grove, the pace of life moves with the tides, and everything from the décor of homes to the way people entertain is informed by the surrounding seascape. Even Miami’s City Hall is an homage to the area’s nautical past: It’s located in the old Pan Am terminal building, a former seaplane hub located on Dinner Key.

From the One Park Grove tower, a short walk through a verdant park leads directly to the bay, where residents can access their boats or simply stake out a spot on the dock to watch the ships come and go. And in addition to direct access to the bay and its picturesque marinas, One Park Grove’s residences offer expansive views of the ocean and the horizon beyond. So even from the privacy of their homes, residents can enjoy an abiding connection to the impressive landscape that surrounds them. In addition, an in-house concierge is available to facilitate all maritime-related activities, from booking yachts for private parties to coordinating sailing lessons and chartering boats. When it comes to entertaining in the tower, One Park Grove offers a bay-view dining room, where residents can treat their private guests to fresh seasonal fare and spectacular views of the water. Since it was first settled, Coconut Grove has been a haven, inhabited by those who see the land as a refuge and the sea as their home. Today, this tradition is very much alive at One Park Grove — a community that is always looking towards the water.



architecture





REM KOOLHAAS



SHOHEI SHIGEMATSU

Given that life and art have always been inextricably linked in Coconut Grove, it follows that One Park Grove, the area’s most dynamic project to date, would be conceived by some of the world’s foremost artistic thinkers. The design was led by Shohei Shigematsu, principal-in-charge of the New York office of the international architectural and design practice OMA (the Office for Metropolitan Architecture) a firm which has been shaping the global conversation around architecture and urbanism since its founding by Rem Koolhaas in 1975. Today, Koolhaas and partners like Shohei Shigematsu continue to shift the very paradigms they helped create. One Park Grove represents a singular opportunity to own a home in the finest — and final — building in Coconut Grove. In addition to its unrivaled location just off Biscayne Bay, One Park Grove constitutes a unique artistic achievement, rendered by some of the world’s greatest living architects. Shigematsu, an active faculty member at the Harvard Graduate School of Design, is known for his unique ability to rethink architectural norms and re-imagine the boundaries of the possible. Shigematsu’s projects include the National Museum of Fine Arts (Musée National des Beaux-Arts) in Quebec and Milstein Hall at Cornell University. He has also led a number of collaborations with leading international artists. He worked with hip hop artist Kanye West to create a seven-screen pavilion at the Cannes Film Festival, masterminded a studio renovation for Chinese artist Cai Guo Qiang, and designed the Marina Abramović Institute for the Preservation of Performance Art in upstate New York.

OMA’s diverse portfolio of award-winning projects includes civic institutions like the Seattle Central Library, cultural landmarks like the Casa da Musica Concert Hall in Portugal, and high rise office towers like the headquarters for the China Central Television Headquarters in Beijing. But Miami will be home to one of the firm’s first commercial residential projects in the United States. In Park Grove, OMA saw an opportunity to create not merely a residential development, but a work of intense intellectual rigor. As such, residents of this building will be living in an exceptional space conceived by some of the world’s leading creative minds. Shigematsu is more than an architect; he is a conceptual artist, which is precisely why Coconut Grove is the ideal place to express his groundbreaking vision.

Though Miami does not lack for luxury towers, the One Park Grove building symbolizes a clear departure from the developments happening elsewhere in the city. Here, OMA assiduously studied the history and geography of the land, and designed a tower that responded to both. Although this structure is undeniably modern, its organic form seems to grow upwards from the earth. In this sense, respecting and embracing the unique landscape on which it stands.

Given One Park Grove’s incredible location right near the bay, the tower is strategically oriented to provide sweeping sea and city views from every residence. From the ground floor to the penthouses, One Park Grove offers a unique perspective from each level. Residents might gaze over leafy treetops to the bay, or be able to see all the way to downtown Miami. The tower is carefully designed to afford dynamic panoramic views of the surrounding landscape. From within the tower, the life of the bay — picturesque ships, breaking waves, passing clouds, fiery



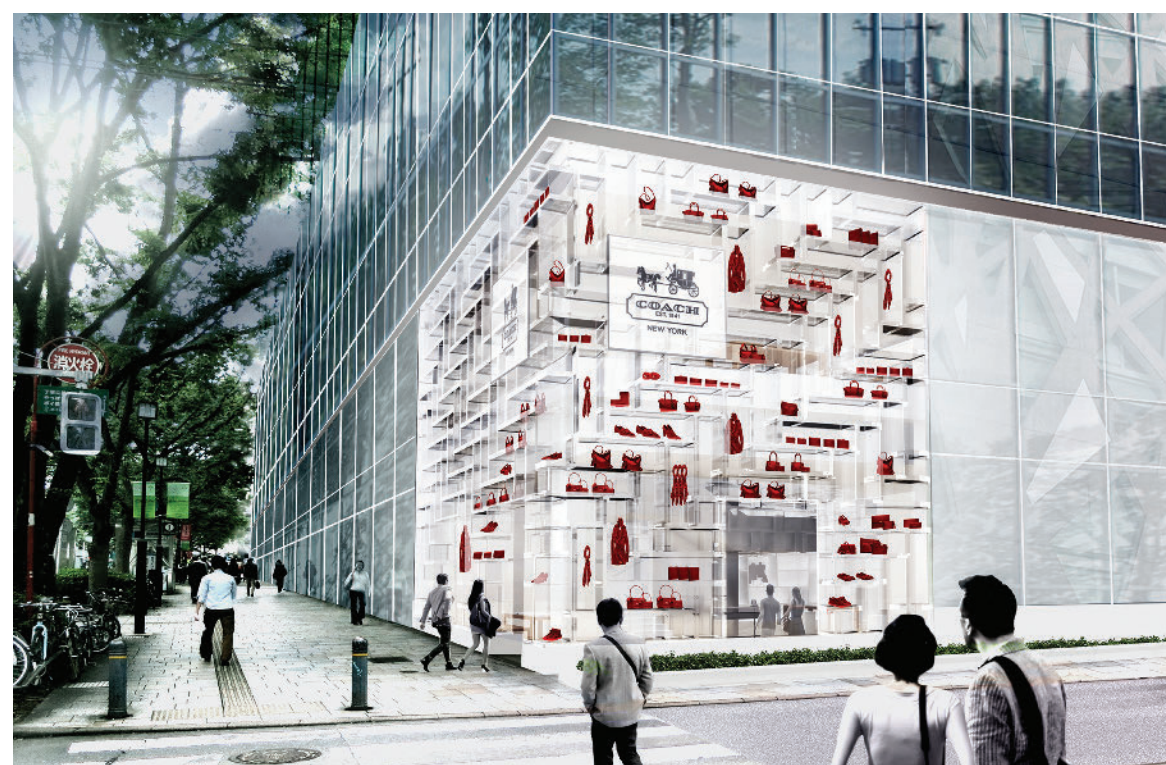
Artist Conceptual Rendering. See Disclaimers Page.

sunsets — becomes an integrated part of being at home. The residences' private balconies and large glass walls provide a sense of connection between the indoors and out, and the ocean becomes the natural backdrop for life.

Beyond the individual units, One Park Grove's common spaces — decks, gardens, lounges, event rooms — also offer dramatic views of the bay. So whether residents are catching an early sunrise, gazing out to sea at midday, or having cocktails as the sun sinks below the horizon, far reaching vistas are an integral part of daily life. Coconut Grove has long been a community that welcomes and supports artists, and with the introduction of high-profile events like Art Basel, Miami has become an art-world destination. Within this environment, it's fitting that artists like Shigematsu would want to leave an indelible mark on Coconut Grove. In a way, this is the logical perpetuation of an artistic cycle that began long ago. At One Park Grove, OMA has done more than create a design-forward tower— it's created dynamic sculptures that will live at the heart of the unfolding Coconut Grove story.



Milstein Hall Cornell University
Ithaca, New York, USA, 2006
Dee and Charles Wyly Theater
Dallas, USA, 2009
Coach, Omotesando Flagship
Tokyo, Japan, 2013





interiors





WILLIAM MEYER



GRAY DAVIS

How does one marry One Park Grove’s strikingly creative architecture and expansive water views with a distinctively chic yet thoroughly relaxed lifestyle? Simple: bring in Meyer Davis Studio, the award-winning design firm founded by Will Meyer and Gray Davis, firmly established at the forefront of high-end commercial and residential interiors throughout the world. The New York-based duo have designed a wide variety of exclusive hotels, including NYC’s Paramount Hotel, Miami’s 1 Hotel, Chicago’s W Lake Shore; several buzzed-about restaurants, such The Loews Regency Bar & Grill and Lombardy Hotel’s Harlow, Miami’s The Dutch and Lure Fishbar; as well as a wealth of designer boutiques such as Oscar de la Renta global boutiques and John Varvatos US stores, and too-numerous-to-count luxurious private homes from Hampton estates to cozy lakefront cabins . In every case, the designers have created a space where a unique and powerful story came to life, merging stunning style with superior comfort and ease.

One Park Grove’s interiors are no exception. Highlighting the remarkable Biscayne Bay’s views at every opportunity, the interiors are as airy and open as they are intimate and welcoming, starting with the dramatically exquisite tone-setting lobby. Whichever the room you choose to visit, the neutral-palette furniture is custom designed, balancing sleek lines with cushioned modernity, punctuated with generous soft lighting and sheer floating ceiling to floor curtains. Arresting, focus-pulling art is scaled to the room’s high ceilings, while curated timeless and timely art books dot the many coffee tables. Communal spaces invite the passer-byer to come and sit awhile, while affording many a nook and corner for those seeking a quiet place to read or just contemplate the view. And whether you choose to throw a formal dinner in one of the private dining rooms or seek refuge from a rainy day in the screening room or library, the atmosphere is one of pure aesthetic delight and gracious comfort. Playing with space, form, texture, and light, Meyer Davis has developed a stellar Coconut Grove visual experience that seeks to uplift and inspire, while weaving together bold design moves and striking details to ensure an immediate and lasting impact.





modern spaces with
timeless finishes
kitchens & baths by
william sofield



WILLIAM SOFIELD

When the world’s most discerning tastemakers wish to create kitchen and baths that are truly remarkable, they turn to acclaimed designer William Sofield. Abiding by the mantra, “Design must live as well as it looks,” Sofield crafts spaces that balance elegance with utility. Architectural Digest describes him as “a maestro of magical interiors, an alchemist capable of conjuring sublime, idiosyncratic spaces that balance opulence and rigor. His methodology, deeply rooted in the principles of modernism, relies on exquisite craftsmanship, fine materials, and adherence to the simple idea that substance and suitability overrule trendiness.”

From commercial projects to private residences, Sofield begins every project with a unique point of view and a daring vision. He often looks to historic precedent, but always reinterprets tradition to make it feel completely fresh and modern. Though his designs have a way of subtly building to an aesthetic crescendo, they are always rooted in practical comforts and the realities of quotidian living. It’s this rare balance — between provocative beauty and utter comfort — that sets Sofield apart in his field.

At One Park Grove, Sofield has crafted breathtaking kitchen and baths that perfectly complement OMA’s striking tower. In the same way that this tower represents artistic achievement, Sofield’s kitchen and baths are works of design genius. In this one-of-a-kind setting, his unique brand of elegant minimalism is articulated through the use of carefully selected organic materials that reflect the surrounding landscape and the sea-oriented community of Coconut Grove. From flooring to countertops, Sofield has made each aesthetic choice with an eye toward building a luxuriously tactile landscape in which to live and play.

In the residences at One Park Grove, Sofield’s unique vision comes through via design details like fine Italian cabinetry and sophisticated stone countertops, but he also lets the impressive natural context speak for itself. A natural color palette—light woods, white walls — creates a sense of ease and lightness that exemplifies the One Park Grove lifestyle.

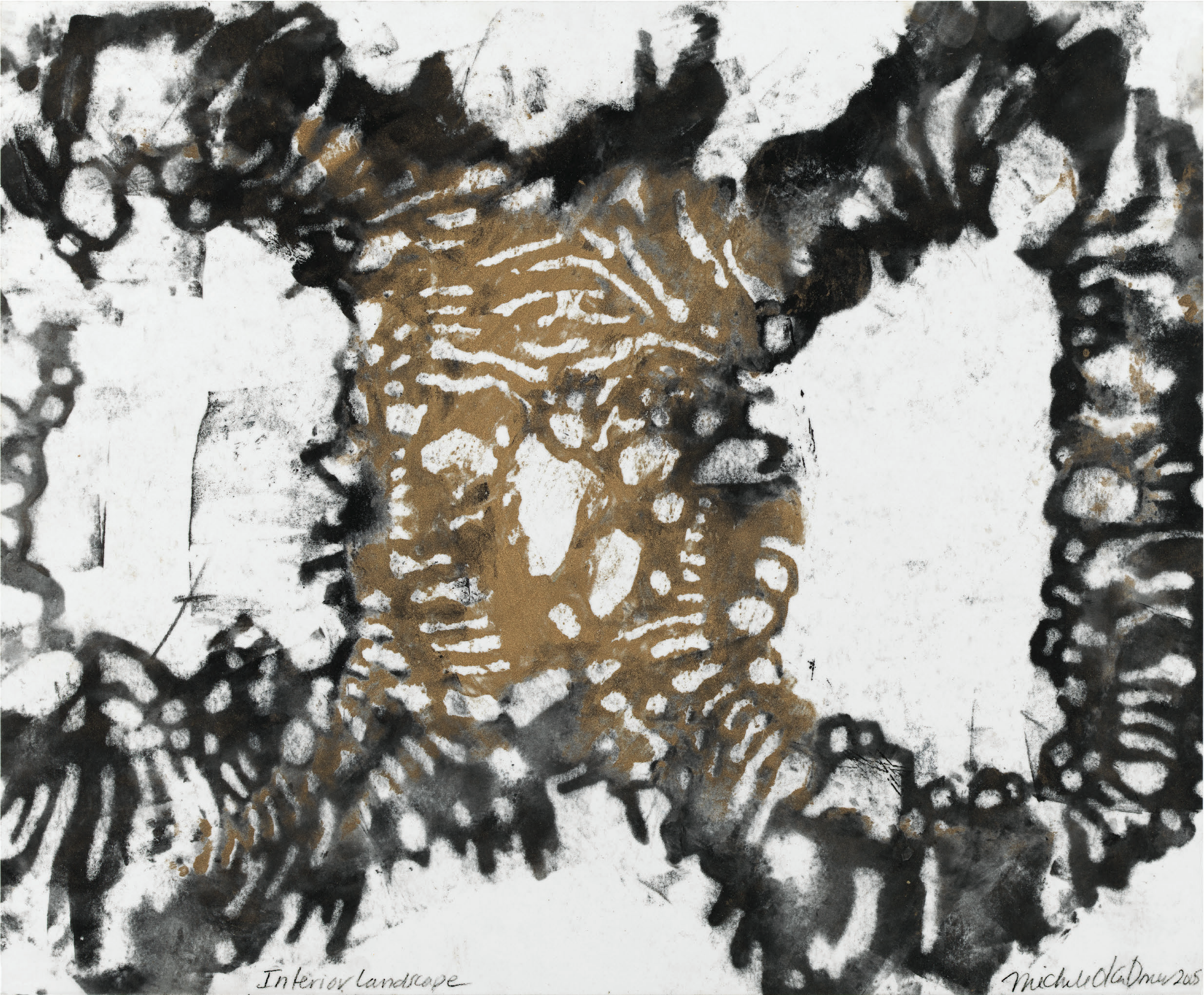
While the public areas of the home provide elegant backdrops where groups can congregate, the kitchen and bathrooms — serve as serene sanctuaries, with plenty of space to spread out and relax in comfort. Sofield’s thoughtful layouts, luxurious materials, and state-of-the-art appliances (Sub-zero, Wolf) elevate the residences at One Park Grove to the highest level of luxury in Miami.

At One Park Grove, every element is designed to complement and enhance the surrounding seascape, and William Sofield’s kitchen and baths are a perfect example of this philosophy. Elegant, understated, and luxurious, they convey a feeling of serenity and good taste. Here, Miami’s most thoughtfully conceived and beautifully executed design is a part of daily life.

Park Grove’s William Sofield-designed kitchen. Airy, open kitchens are outfitted with the highest level of finishes and top-quality appliances. Photograph of furnished kitchen.



landscape



private gardens & elegant
outdoor living landscape
by enzo enea



ENZO ENEA

The lush, subtropical landscape of the Florida coastline has always had a defining influence on the culture of Coconut Grove. It was the leafy forests and palm-shaded shores that first lured mariners from the sea. Freshwater springs convinced early settlers to stay, and those living here have prospered ever since. Vibrant landscapes and abundant resources continue to define life in Coconut Grove today. Those who live here engage with their natural surroundings constantly — whether they’re picnicking in local parks, strolling along shaded sidewalks, sitting on docks that jut into the bay, or setting sail for a day at sea. The natural environment is a fundamental part of the Coconut Grove experience. As such, every built environment here must complement, respect, and enhance what already exists. Given this sensitive mandate, it was clear that only a design genius would be able to further beautify the already breathtaking property at One Park Grove. Yet somehow, visionary landscape designer Enzo Enea has elevated this landscape to a new level.

Trained as both an industrial designer and landscape architect, Enea has worked in locales around the world. He gained formal training in Switzerland and London, where he earned numerous accolades, including multiple gold and silver awards at the Giardina show in Basel and Zurich, and a certificate of merit from the prestigious Chelsea Flower Show in London. Beyond his projects in Europe, Enea has worked in tropical locales like Brazil and Hawaii, experimenting with native species and learning the nuances of landscaping in a range of climates and ecosystems. He brings this incredible breadth of knowledge to his work at One Park Grove. Known for his unique ability to craft livable outdoor spaces that blur the boundaries between a structure and its surrounding landscape, Enea sought to create harmony between OMA’s soaring tower and the vibrant coastal landscape that supports it. The result is a series of landscaped gardens that create a natural conversation between the built environment and the lush landscape that has always existed in Coconut Grove. A highlight of the project is the park that Enea masterminded, which forms a pathway from the One Park Grove tower to the bay. In creating this corridor, he has designed both a physical and spiritual link from life in the tower to life on the water.

Enea is also one of the world’s foremost tree specialists and collectors. In 2010, he opened the Enea Tree Museum near Upper Lake Zurich in Switzerland. Here, he created a wonderland that showcases 50 featured trees from around the world — some of which are more than 100 years old — alongside sculptures and designed plots of land. He took a similar approach to One Park Grove. Here, the preservation of existing trees was a top priority, and many of the property’s native species have been protected and highlighted in Enea’s designs. Sustainability, along with beauty, is always at the forefront of his work.

At Park Grove, Enzo Enea
created a harmonious landscape
where the wild and the built
environments meld into one.



Artist Conceptual Rendering. See Disclaimers Page.

One Park Grove’s impressive sculpture garden is a place where residents can stroll, read, picnic, and relax amongst works of art that are seamlessly integrated into the natural environment. This is a hallmark of Enea’s work — the ability to blend landscape, botany, art, architecture, and design to create an innovative environment that still feels deeply rooted in place. In combination with the natural environment, Enea’s landscapes create a harmonious experience for the residents of One Park Grove. This fluid indoor-outdoor mentality extends to all areas of life — from the airy residences with their private balconies, to the impressive gardens that frame the tower. Although privacy is paramount at One Park Grove, there is little definitive separation between indoors and out. In his forward-thinking work, Enea has created spaces where residents can immerse themselves in nature, while still enjoying the privacy of home. Residents might entertain on their own private balconies, or meet for cocktails at the rooftop pool. They might practice yoga in one of the many outdoor fitness spaces, or spend time with their families in the outdoor play areas for children. The gardens themselves offer endless paths to walk, sculptures to discover, nooks to uncover, and spaces in which to steal away. But in the end, all paths lead back home to One Park Grove.

All of Enea’s work is defined by an abiding respect for history, sustainability, and the relationship between the built environment and the natural world. At One Park Grove, this philosophy manifests itself in myriad ways. Enea has managed to create a landscape that both builds off of Coconut Grove’s rich natural history, but also suggests a way forward. His lush gardens serve to ground OMA’s elegant tower, but also enhance them. His gardens provide a sense of escape, but also a profound feeling of intimacy and protection. It’s these subtle but crucial nuances that set the world’s greatest properties apart from the rest, and One Park Grove can now count itself among this number.

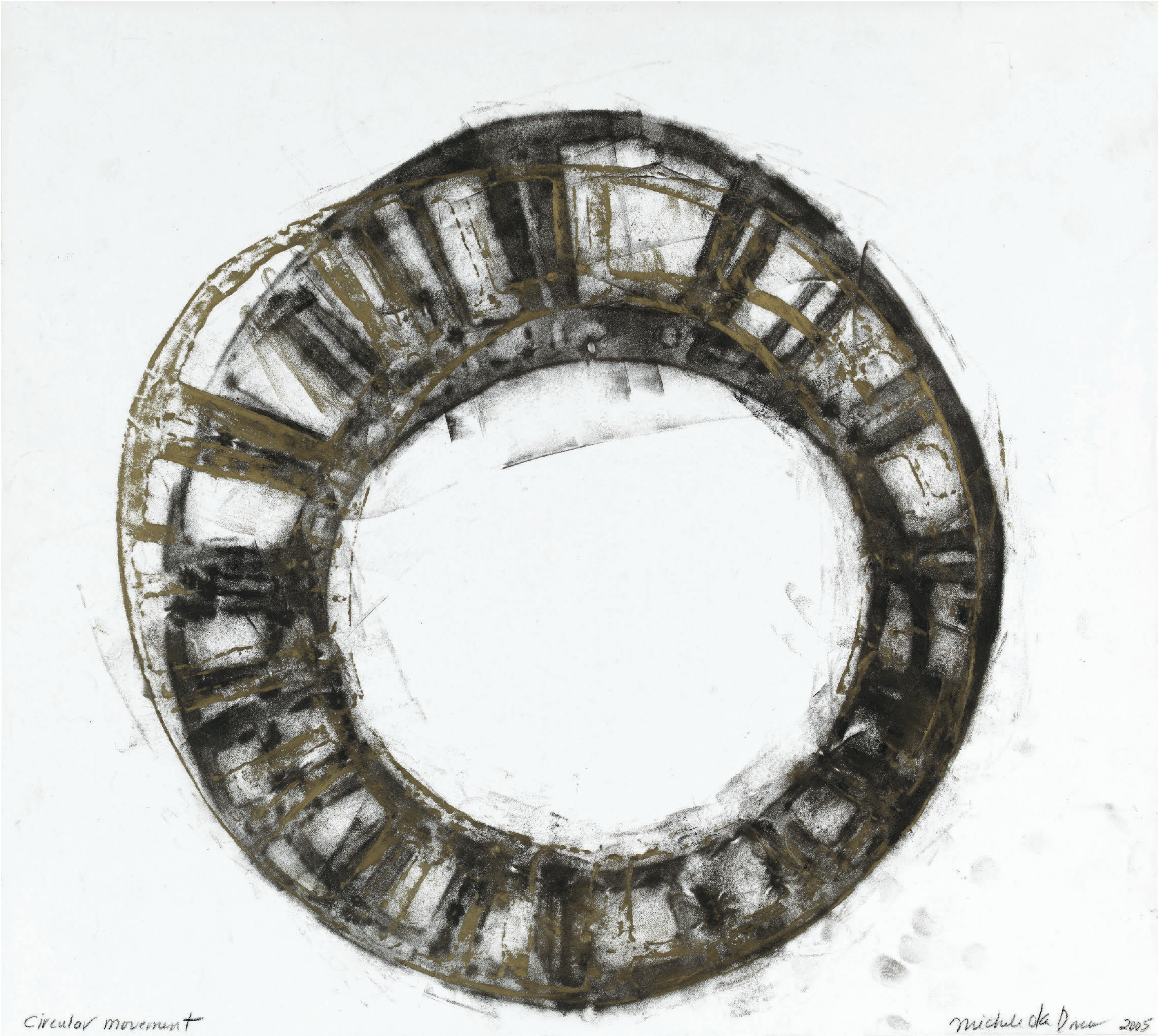


Artist Conceptual Rendering. See Disclaimers Page.



Artist Conceptual Rendering. See Disclaimers Page.

lifestyle





COLIN COWIE

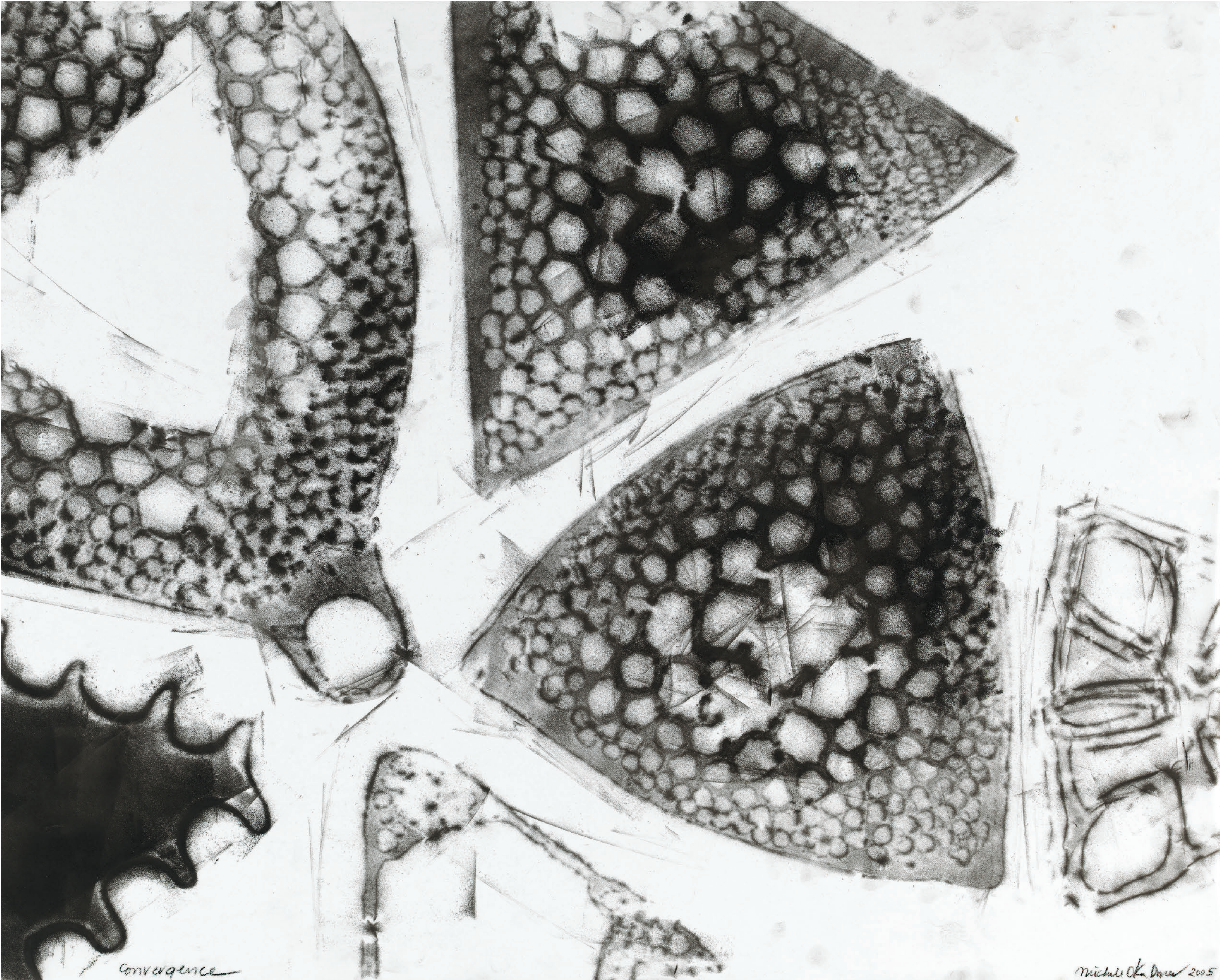
Colin Cowie, born in Zambia and raised in South Africa, is an international design star that has created numerous events of the year, including a party for Barbie’s 50th birthday. His clients include Jennifer Lopez, Tom Cruise, Oprah Winfrey and several royals. He is based in New York City, and makes frequent appearances on the “Today” show, but bounces around the globe like an energetic ping pong ball. He has been coming to Miami for a decade. “I love the Latin culture, the people,” he says. “It’s a fun city, the Manhattan of the Caribbean.”

One Park Grove is Cowie’s first time designing a lifestyle for a condo, supplying the accents that make a building special: “Everything down to the color of the buttons on the valets,” he says. “The fragrance. The thread count of the towels at the pool. The programmable music. What you smell, touch, taste from the time you arrive until you leave.”

He also plans a charming shop in One Park Grove’s cream and bronze lobby. “You’ll be able to buy small bouquets of flowers there,” Cowie says. “Have a snack, a coffee. If you’re on your way to see a resident, or if you’re on your way out to see someone, you’ll have a convenient place to pick up a candle or fragrance.”



development team



a shared vision and
passion for the grove
the development partners

TERRA DEVELOPMENT PARTNER

Terra is more than a real estate development firm — it's a civic galvanizer that works tirelessly to reinvigorate communities, enhance the urban landscape, and promote culture throughout South Florida. Founded in 2001 and led by father-and-son team Pedro and David Martin, this Miami-based firm is known for its trendsetting high-end residential communities that are as innovative as they are impactful. Through its thoughtful development strategy, Terra has gained a reputation for revitalizing neighborhoods and raising the overall profile of the areas it develops. The firm's unparalleled success in the region is largely due to the expertise and talent of its multi-faceted team, which includes architects, builders, designers, and strategists working together to bring Terra's vision to life. Beyond exceptional development, this award-winning team also plays an active role in charitable, civic, arts, and cultural organizations — a testament to its deep commitment to enhancing and enriching the community from every angle. Along with Related Group, Terra is the publisher of The Grove magazine.

RELATED GROUP, DEVELOPMENT PARTNER

Since its founding in 1979, Related Group of Florida has been at the forefront of luxury condominium development, setting a new industry standard for excellence and innovation. Helmed by Chairman and CEO Jorge Pérez, one of the country's leading entrepreneurs, Related has built and managed more than 80,000 condominium and apartment residences in major markets throughout Florida. Led by Carlos Rosso, Related's Condominium Division is known for its groundbreaking luxury properties, including Miami's Portofino Tower, Apogee, Murano Grande, and multiple collaborations with Donald Trump. The celebrated firm's properties showcase impeccable craftsmanship, innovative design, and a commitment to creating spaces that will endure and appreciate with time. Often partnering with world renowned architects, designers, and artists, Related continues to push boundaries and raise the bar for the entire real estate community. Its dozens of awards include the Honor Award from the National Building Museum — an acknowledgment of architecture and design excellence in new development.



Artist Conceptual Rendering. See Disclaimers Page.



Artist Conceptual Rendering. See Disclaimers Page.



Artist Conceptual Rendering. See Disclaimers Page.

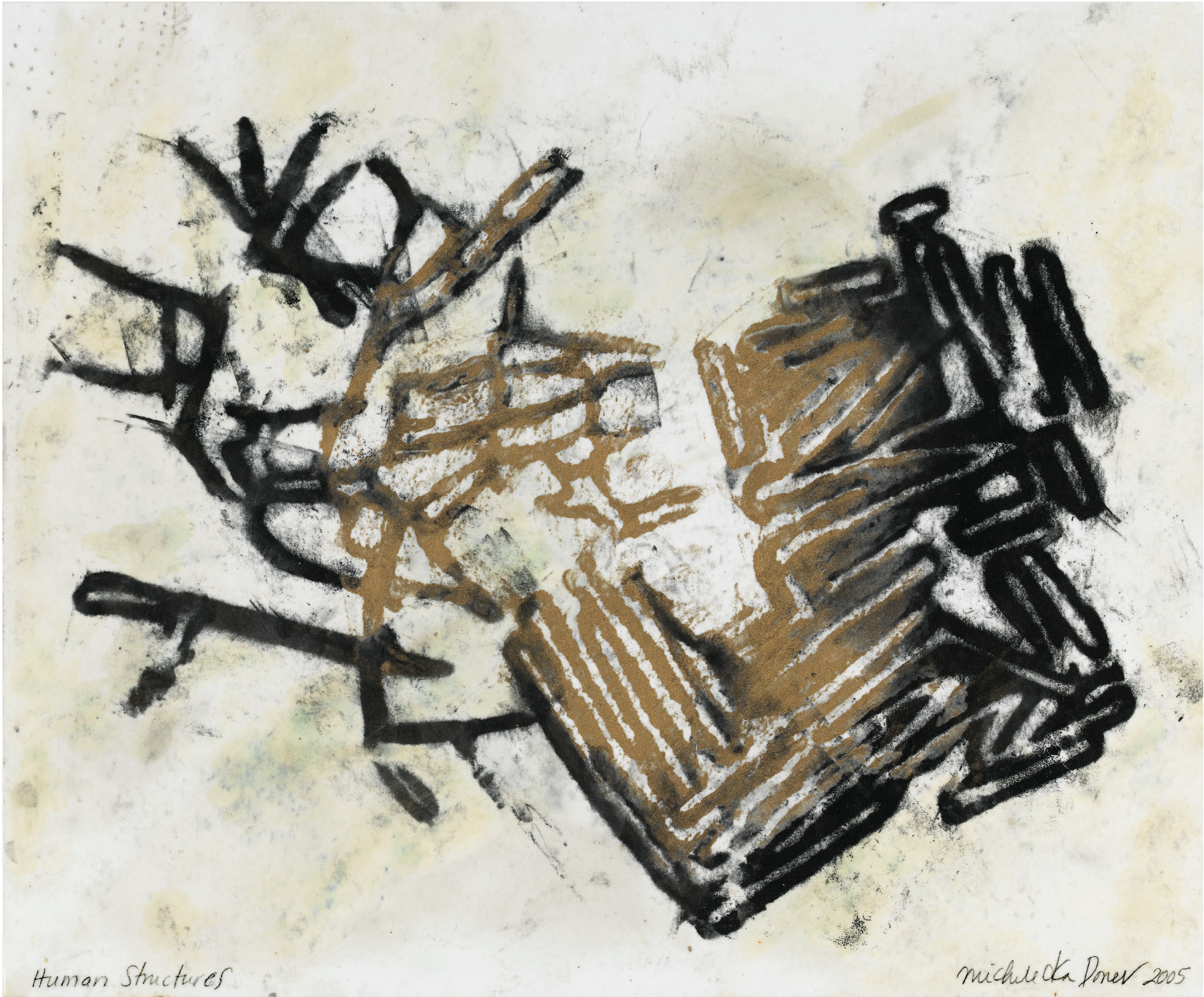


Artist Conceptual Rendering. See Disclaimers Page.



Artist Conceptual Rendering. See Disclaimers Page.

views



Human Structures

Michèle Diner 2005



Artist Conceptual Rendering. See Disclaimers Page.





Artist Conceptual Rendering. See Disclaimers Page.



Artist Conceptual Rendering. See Disclaimers Page.





residences



The residences at One Park Grove are magnificent three to six bedroom, estate quality homes, with 12-foot ceilings, floor-to-ceiling glass windows and doors, private oversized waterfront terraces and spectacular views of Biscayne Bay.



Artist Conceptual Rendering. See Disclaimers Page.



Artist Conceptual Rendering. See Disclaimers Page.



Artist Conceptual Rendering. See Disclaimers Page.



Artist Conceptual Rendering. See Disclaimers Page.





Artist Conceptual Rendering. See Disclaimers Page.



Artist Conceptual Rendering. See Disclaimers Page.



Artist Conceptual Rendering. See Disclaimers Page.





Artist Conceptual Rendering. See Disclaimers Page.

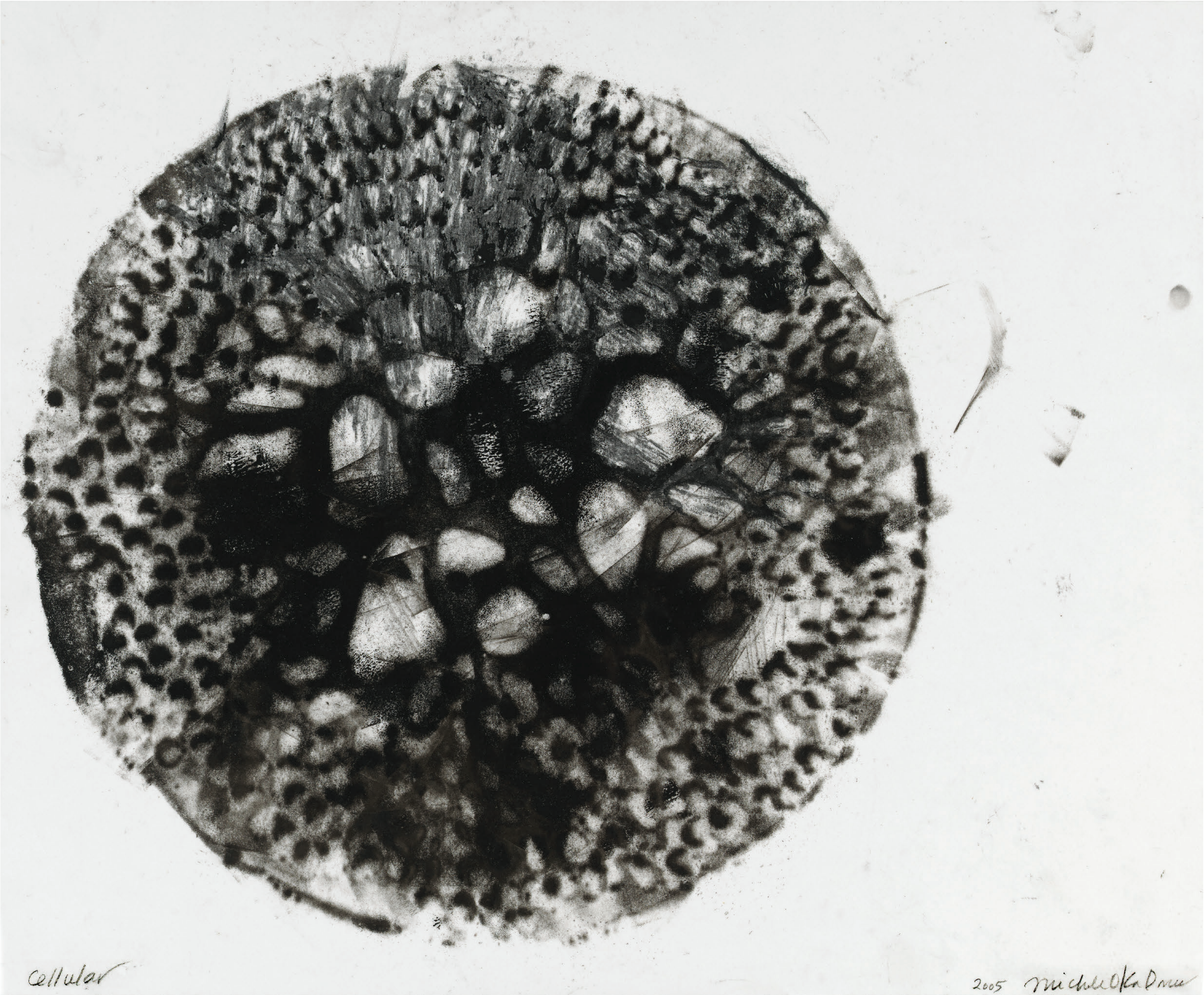


Artist Conceptual Rendering. See Disclaimers Page.



Artist Conceptual Rendering. See Disclaimers Page.

amenities



the luxuries of life at
one park grove
the club & amenities

Though it's located just a few miles from downtown Miami, One Park Grove feels like a peaceful world unto itself. And in addition to its unmatched bayside location, residents here have access to a wealth of services and amenities that rival those at any of the area's high end hotels or members clubs. Here, residents' needs are anticipated, their desires fulfilled, and their expectations exceeded. From its rooftop pool to its on-call butler service, One Park Grove represents the absolute pinnacle of luxury living.

Being active and staying healthy is a priority for many living at One Park Grove. Within the tower, residents have access to state-of-the-art fitness facilities, private training rooms (including a pilates room and spinning studio), indoor and outdoor yoga spaces, and a spa with personal treatment rooms, steam rooms, and saunas. Personal trainers are on-call for residents who wish to set up a structured workout regimen.

When it comes to relaxation, One Park Grove boasts a number of peaceful pools, flanked by private cabanas. Some of these are overhung with leafy palms, while others are located at rooftop level and boast panoramic views of Biscayne Bay and the Miami skyline. Those looking to entertain can do so in the building's many indoor or outdoor lounges and bars. A private dining room, adorned with impressive contemporary art, can be reserved for private events; and an on-call chef can be arranged for any catering needs. Given One Park Grove's dynamic and discerning community, it follows that it's a cultural haven of sorts. Here, residents can attend curated events and lectures, musical performances, private film screenings, and private tastings — all without leaving home. In quieter moments, they can also take advantage of a billiards room and state-of-the-art private screening and media room. For those desiring extra storage to enhance their lifestyles, there are dedicated areas for bike and watercraft storage, in addition to a wine cellar and private wine lockers.

When it comes to services, all residents have access to a 24-hour concierge, valet, and butler, so no need will go unmet. At One Park Grove, every facet of life is attended to with assiduous attention to detail and the highest level of discretion.



Artist Conceptual Rendering. See Disclaimers Page.

one park grove

With over 50,000 square feet of carefully conceived amenity spaces—from the practical to the luxurious—and world-class services curated by Colin Cowie, One Park Grove offers one of the most comprehensive indoor and outdoor living experiences in Miami. One Park Grove brings high-style living to an entirely new level.

bayfront residences
three bedrooms to six bedrooms



Artist Conceptual Rendering. See Disclaimers Page.



AMENITIES

- Signature restaurant, bar and catering by Chef Michael Schwartz
- Resident concierge app
- 28 seat private screening room
- Wine tasting rooms with private wine storage
- Private dining & event space
- Full-service bar
- Poolside cabanas, towel service and dining
- Outdoor bar
- Jacuzzis
- 500 ft. of bayfront pools and pool decks
- Park Grove lounge & bistro
- Indoor and outdoor children's play areas
- Lobby living room
- Lounges
- Business centers and meeting rooms
- Specialty retail
- Whole body fitness centers
- Mind body wellness lounge
- Indoor yoga studio and outdoor yoga area
- Mens' locker room
- Womens' locker room
- Signature spa with treatment rooms
- Couples treatment room
- Bio-sauna with aroma infusion and herbal steam
- Package rooms and mail rooms
- Library
- Personal training room / yoga & pilates studio
- World class art collection
- Five acres of private gardens by Enzo Enea
- 24-hour doorman / concierge / security
- Butler service
- Espresso bars
- Private dining room

BUILDING FEATURES

- 50,000 sq. ft. of luxurious lifestyle amenities designed by Meyer Davis, and curated by Colin Cowie
- Façade featuring faceted concrete columns, the shape inspired by Coconut Grove palm trees
- Floor-to-ceiling insulated glass panels
- Private, keyed elevators
- Private art gallery and lounge
- Assigned parking spaces and valet parking available for all residences
- Reception area custom designed by Meyer Davis

one park grove

RESIDENCES

- Dedicated elevator lobbies and private elevators to residences
- Expansive outdoor living area
- 12-foot ceiling heights
- Aluminum floor-to-ceiling glass window walls
- Private outdoor terraces up to 1,000 sq. ft.
- Natural stone and porcelain wood tile flooring selections
- Pre-wired for high speed internet
- Solid core interior wood doors
- Electrolux 27" washing machines and 27" vented steam dryer



Artist Conceptual Rendering. See Disclaimers Page.

KITCHEN

- Designed by William Sofield
- Custom Italian glass cabinetry with wood hewn island
- Paonazzo marble or Quasar granite countertops and oven wall tower
- Dornbracht plumbing fixtures, chrome finish
- Stainless steel undermount sink
- Bronze or smokey mirror backsplash
- Sub-Zero 30" column refrigerator
- Sub-Zero 30" column freezer
- Sub-Zero undercounter wine cooler
- Wolf 36" stainless steel gas cooktop
- Asko dishwasher with custom wood hewn panel
- Wolf 30" stainless steel wall oven
- Wolf 24" stainless steel built-in coffee maker
- Best stainless steel built-in hood
- Hand-honed wood accent pieces

MASTER BATHROOM

- Designed by William Sofield
- Free standing soaking tub in penthouse units
- Separate his and hers bathrooms in penthouse units
- Soaking tub with white Himalayan spider stone surround (A, B & C units)
- Dornbracht plumbing fixtures, chrome finish
- Double vanities
- Toto toilet and bidet
- White Himalayan spider stone vanity tops, Wainscot tub surround and shower walls
- Custom Italian cerused finish wood vanities
- Herringbone patterned seashell stone flooring
- Custom-design backlit mirrors
- Full height mirrors



Artist Conceptual Rendering. See Disclaimers Page.



Artist Conceptual Rendering. See Disclaimers Page.



Artist Conceptual Rendering. See Disclaimers Page.



Artist Conceptual Rendering. See Disclaimers Page.



Artist Conceptual Rendering. See Disclaimers Page.



Artist Conceptual Rendering. See Disclaimers Page.



Artist Conceptual Rendering. See Disclaimers Page.



Artist Conceptual Rendering. See Disclaimers Page.



Artist's Conceptual Rendering. See Disclaimers Page.



Artist Conceptual Rendering. See Disclaimers Page.

children's playroom



Artist Conceptual Rendering. See Disclaimers Page.





Artist Conceptual Rendering. See Disclaimers Page.

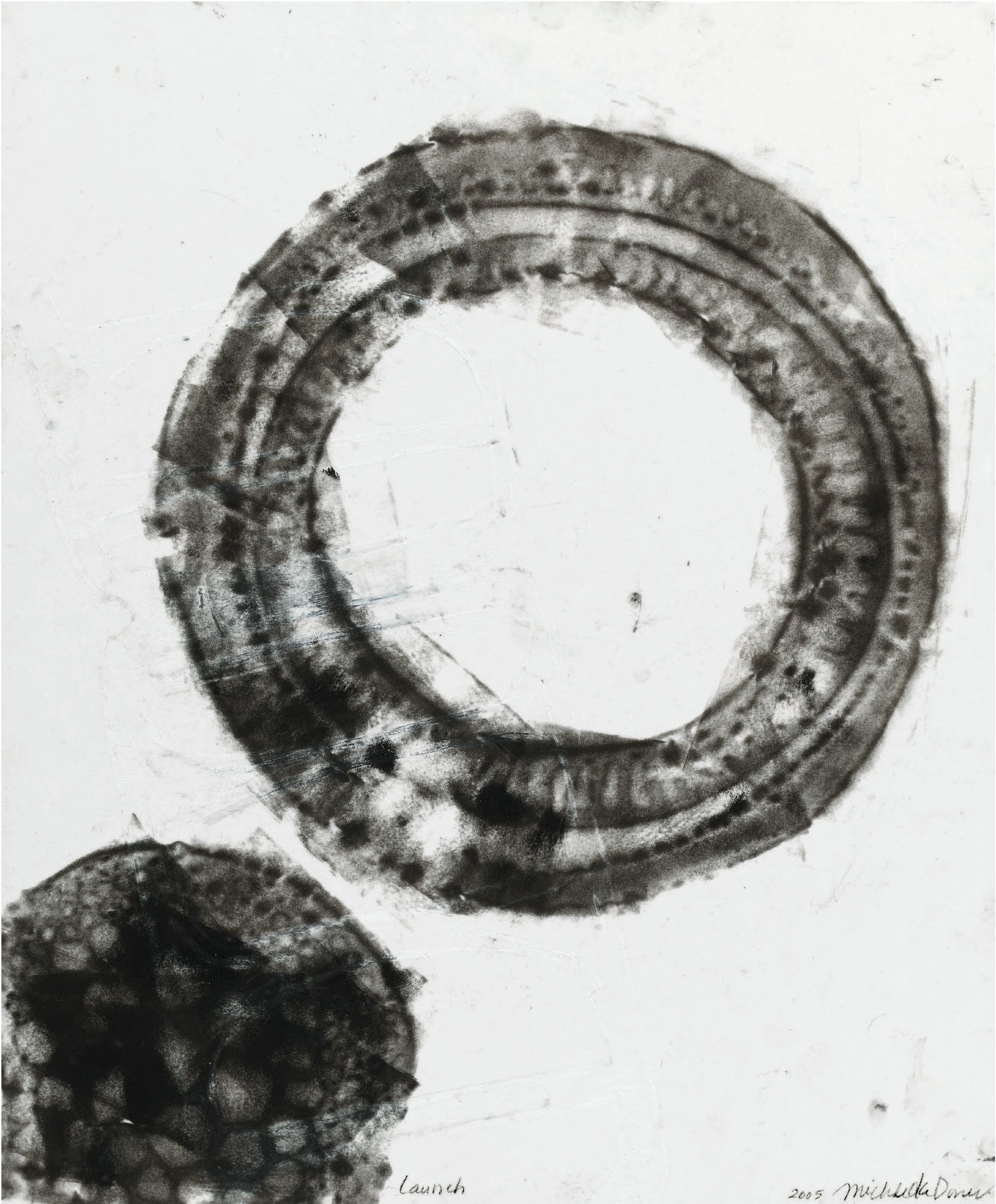


Artist Conceptual Rendering. See Disclaimers Page.



Artist Conceptual Rendering. See Disclaimers Page.

art



Launch

2005 Michaela Diner

How do you assemble a private art collection for clients you’ve never met? Jorge Pérez, chairman of The Related Group and avid collector is grappling with this question as he plans Park Grove, the luxury Miami residential complex he’s building with David Martin’s Terra, in which “art is going to play an integral part,” according to Pérez. “The art is going to be real and substantive and will comprise the building’s permanent collection,” Pérez confirmed. “Since I am going to be moving to Park Grove, I want it to be like my house,” says Pérez, “with incredible landscaping, a world class art collection, and design that is second to none.”

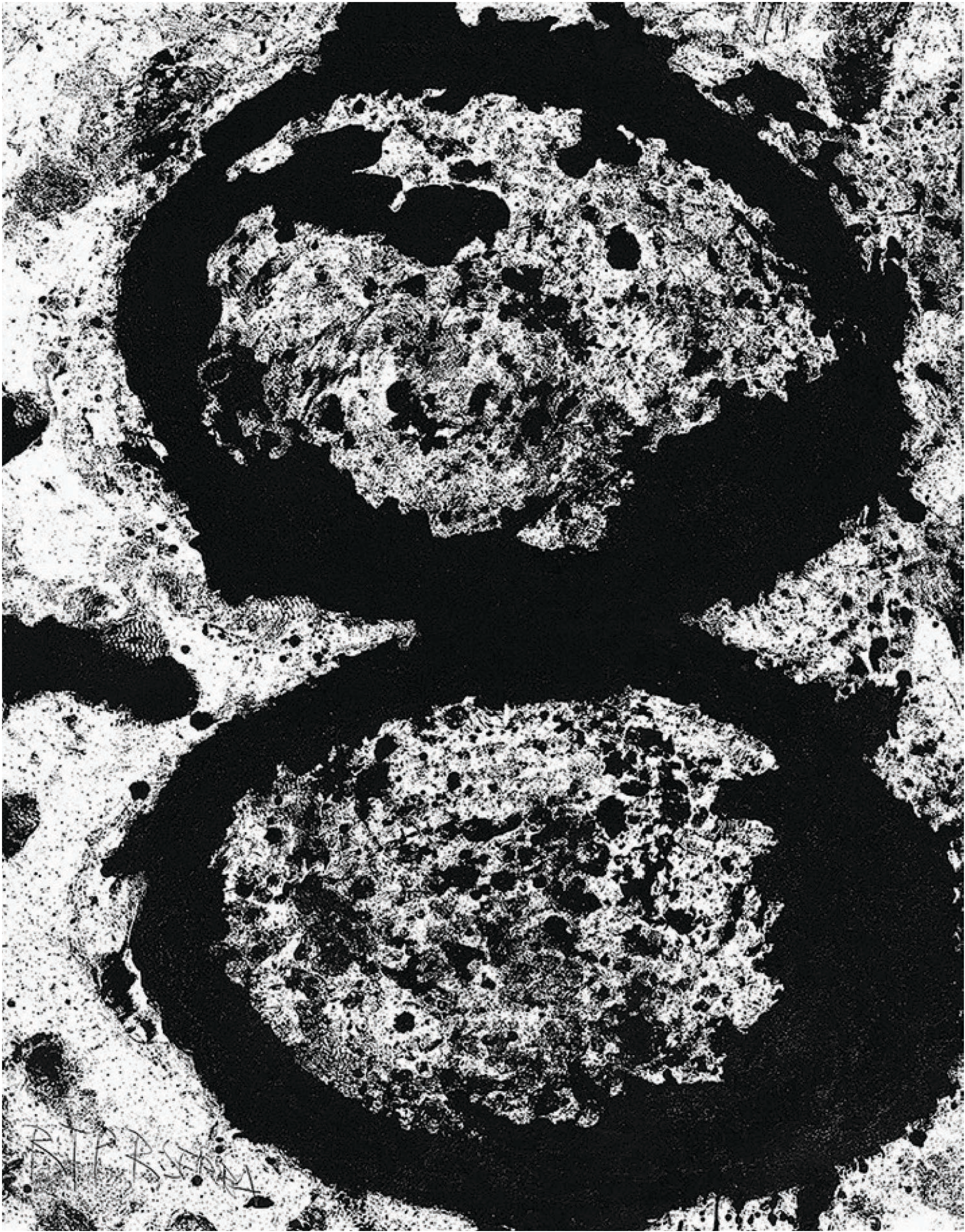
The frame for the fine art Pérez and Martin are bringing together will be the Coconut Grove buildings themselves — three residential towers along with several amenity structures housing a library, spa, fitness center, bank, restaurant, commercial art gallery and more. The buildings, along with interiors and outdoor areas, are being designed by a Who’s Who of stars including architects Rem Koolhaas and Shohei Shigematsu, landscape designer Enzo Enea, kitchens & baths by William Sofield and interiors by Meyer Davis.

The “museum quality pieces” they intend to install will include a mix of work from Terra and The Related Group’s expansive corporate collections, new acquisitions and site-specific commissions. The selection and acquisition process “will be rigorous,” according to Martin, and “it will involve a committee of our own curators and outside experts.” Ultimately, the collection “will be the property of the residents of Park Grove,” said Martin, “and I hope it will add to the beauty and fullness of their daily lives.”



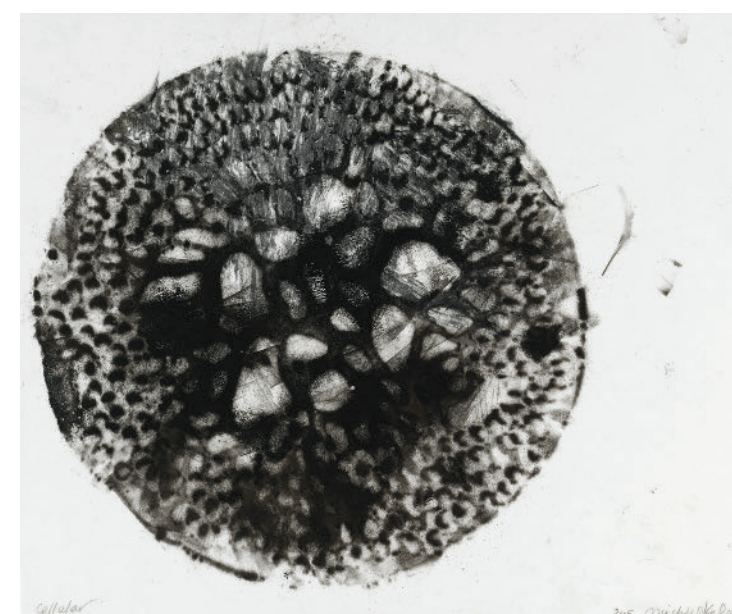
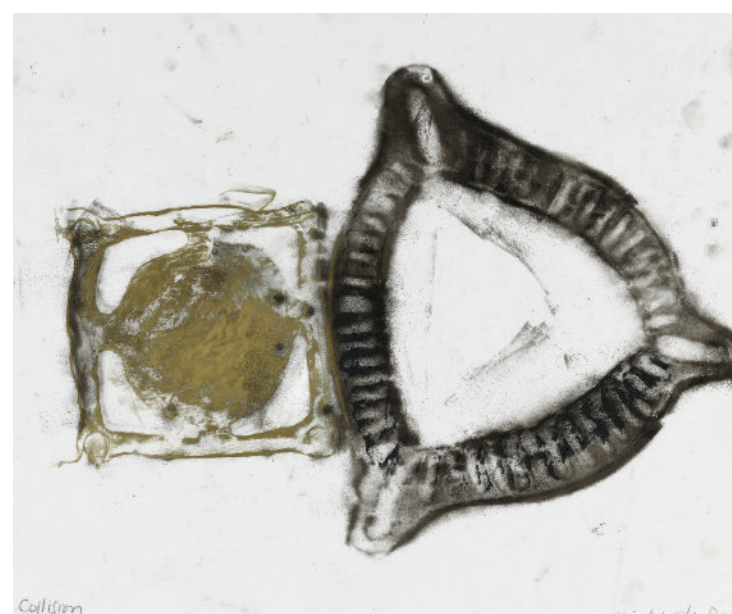
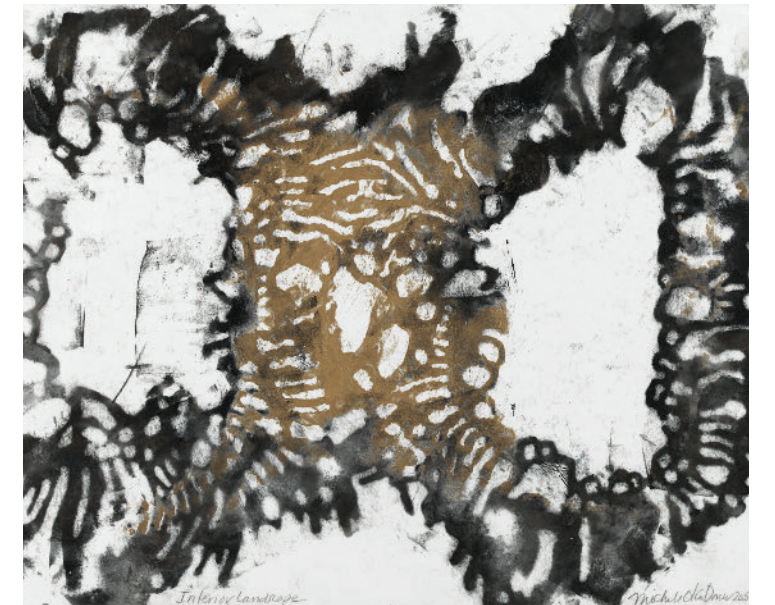
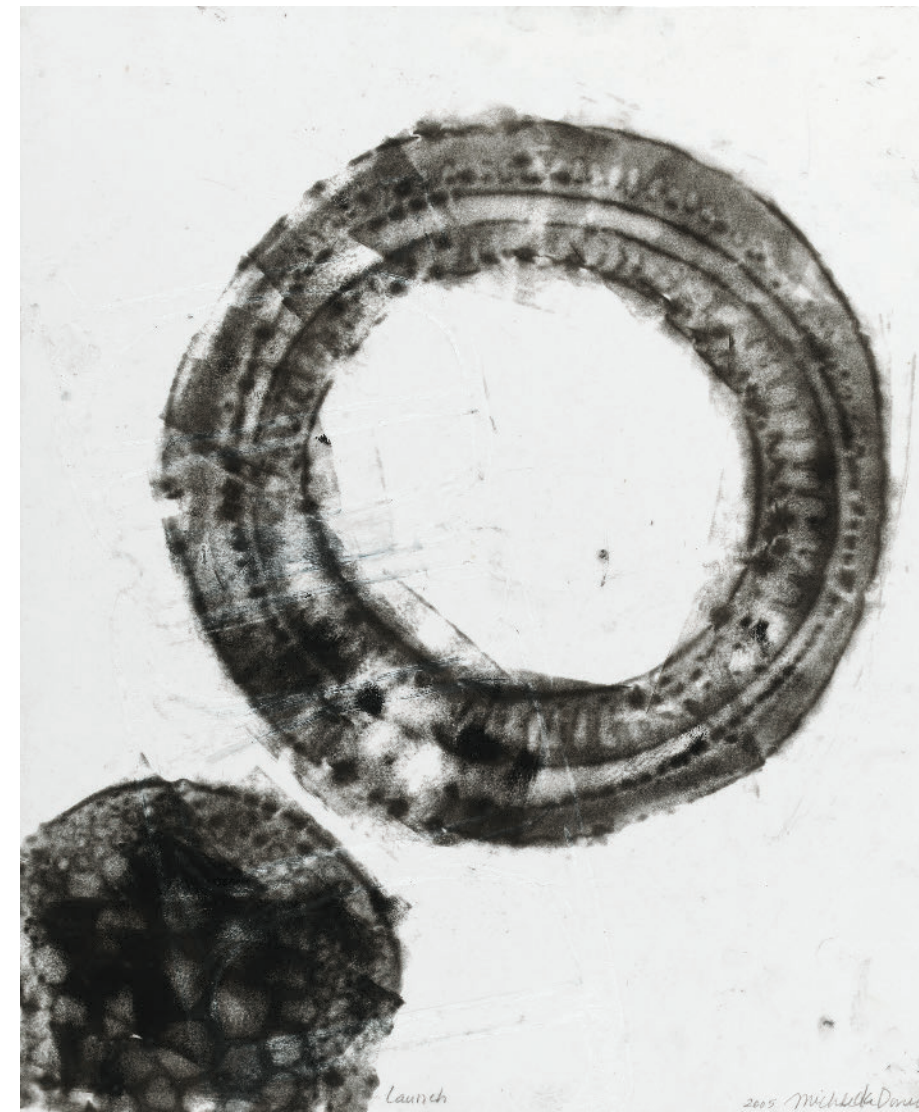
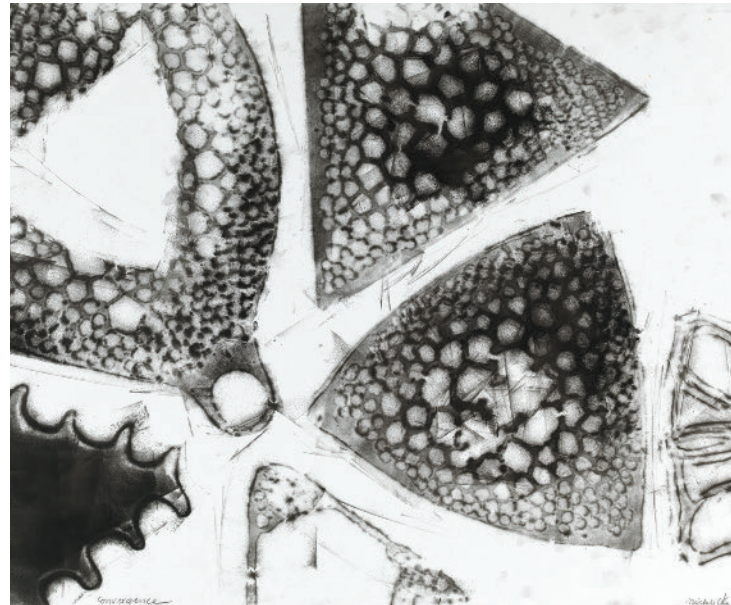
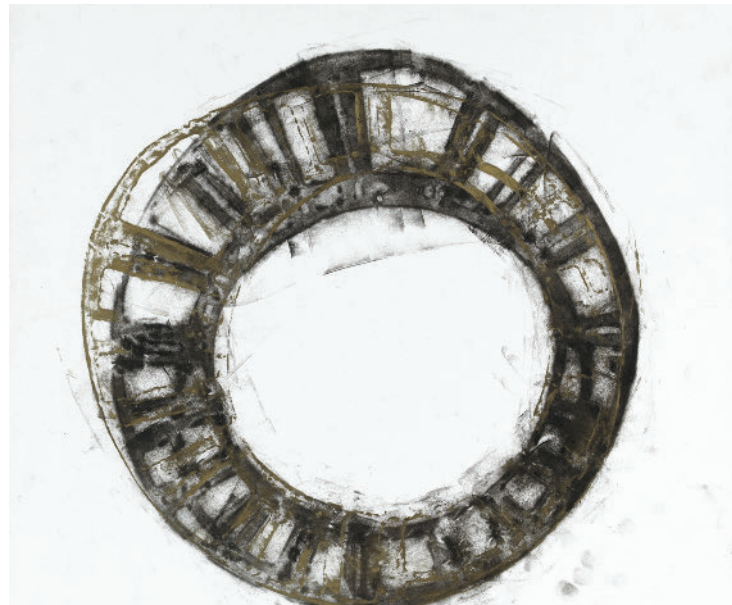
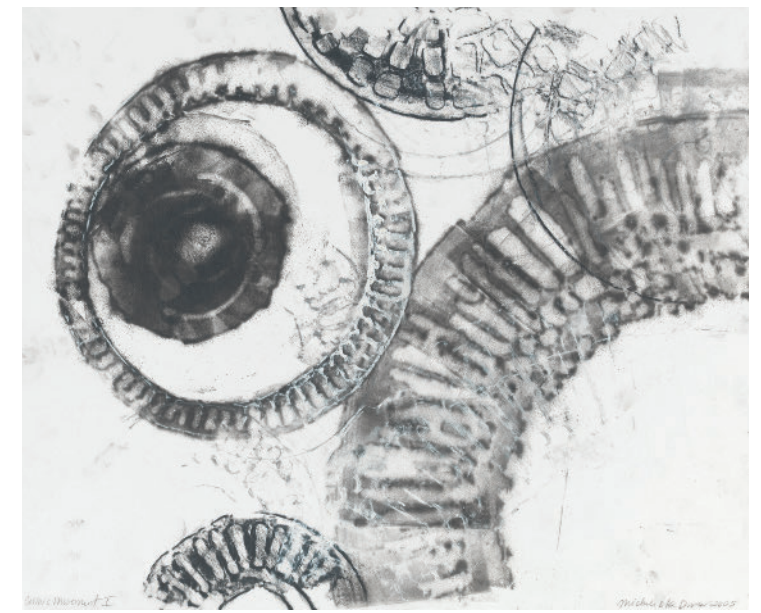
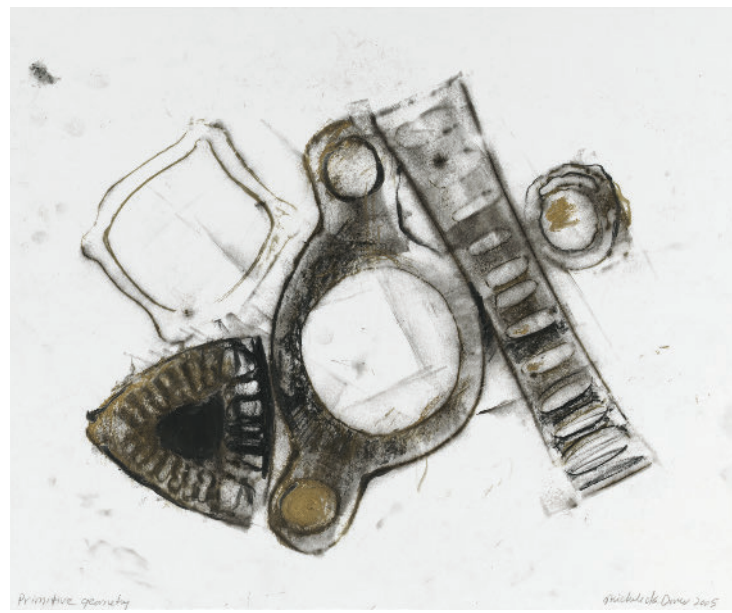
Li Gang
No Painting, 2013
Sculpture made out of stone

Richard Serra
T.E. Vectors, 2001
1-Color etching





Betsabee Romero,
Espejos de Malinalco, 2013
19 security mirrors,
vinyl cut with sand bath



Michele Oka Doner, 2005
Oil stick and printers ink on vellum

Jaume Plensa,
The Poets in Bordeaux
(Body Soul God, Country,
Water Fire), 2001

Ledelle Moe
Memorial Collapse V,
2006-2007
Concrete and steel



Isaac Julien
Chameleon (Ten Thousand
Waves), 2010
Endura Ultra photograph,
diasc mounted



coconut grove parks



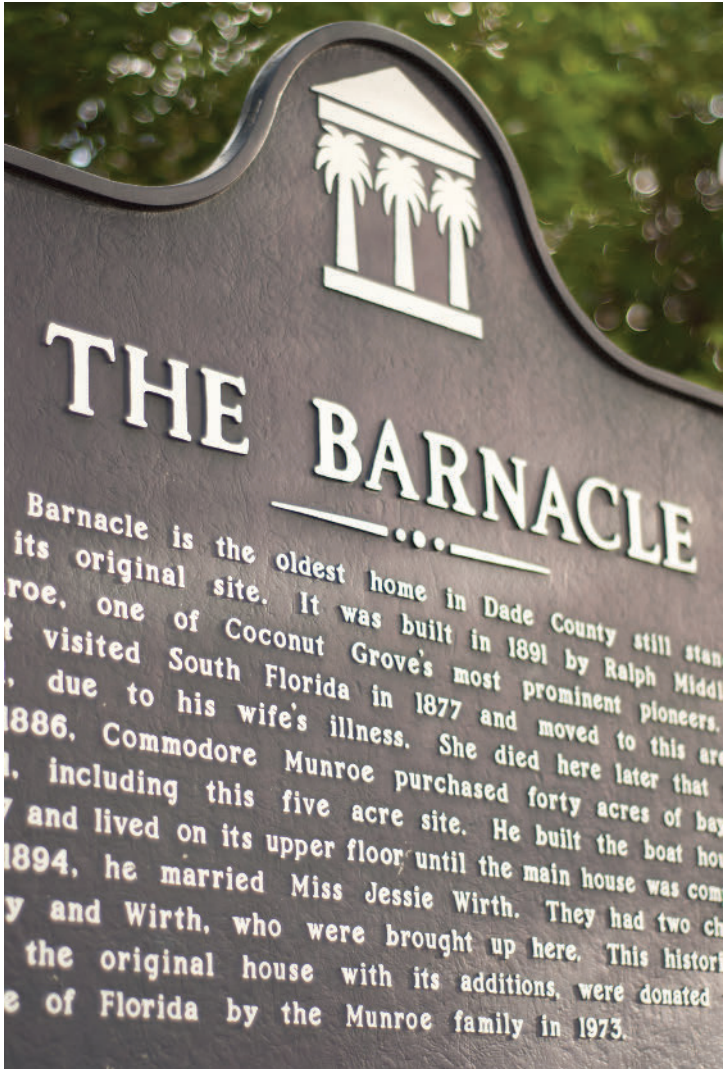


A roundup of Coconut Grove’s premiere parks where each oasis of green offers up an array of outdoor pleasures.



peacock park

This 9.4-acre bayfront park is named in honor of Charles and Isabella Peacock, the proprietors of Miami’s first hotel built in 1883. Today the park is popular with kickball and softball leagues. Right next to the park, you’ll find the Coconut Grove Sailing Club.



the barnacle historic state park

This charming 5-acre historic park is home to the oldest house in its original location in Miami-Dade County. The Barnacle, built in 1891, was the home of Ralph Middleton Munroe, one of Coconut Grove’s founders, as well as founder and Commodore of the Biscayne Bay Yacht Club. The Barnacle Society sponsors numerous events throughout the year, including yoga by the sea, moonlight concerts, outdoor films, and old-time dances.

vizcaya museum and gardens

Vizcaya Museum and Gardens is a National Historic Landmark that preserves the Miami estate of agricultural industrialist James Deering to engage our community and its visitors in learning through the arts, history and the environment.



kennedy park

This is the Grove’s go-to park for getting in shape: outdoor gym equipment, walking and running paths, and sand volleyball courts. There is also a children’s playground and two enclosed dog runs. Wooden docks provide glorious views of the water.



the kampong

This magnificent, tropical garden, part of the non-profit National Tropical Botanical Garden, is truly one of Miami's hidden gems. Home to more than 2,000 tropical and aromatic plant species, the 11-acre property was originally a winter home for the famed horticulturalist Dr. David Fairchild. Here, he amassed a stunning collection of tropical plants from all over the globe. Visitors can tour this magical garden, attend lectures, and take classes.



credits



one park grove

Designed by a world-class team of leading architects, designers, and developers, One Park Grove marries inventive modern design with Coconut Grove’s rich cultural legacy, creating an ambiance that is as luxurious as it is relaxed. From its residences to its amenities, One Park Grove offers the ultimate in serene bayfront living.

Architecture by OMA • Rem Koolhaas
Interiors by Meyer Davis
Kitchens & Baths by William Sofield
Landscapes by Enzo Enea
Sculpture by Jaume Plensa
Lifestyle Amenities by Colin Cowie
Signature Restaurant by Chef Michael Schwartz

2701 South Bayshore Drive, 7th Floor
Miami, Florida 33133
oneparkgrove.com
305 834 7600

 **Terra**  **RELATED**

Exclusive Marketing and Sales Agent
Douglas Elliman Development Marketing

Disclaimers Page

This condominium is being developed by 2701 Bayshore One Park Grove, LLC, a Florida limited liability company (“Developer”), which has a limited right to use the trademarked names and logos of Terra and The Related Group. Any and all statements, disclosures and/or representations shall be deemed made by Developer and not by Terra and The Related Group and you agree to look solely to Developer (and not to Terra and The Related Group and/or each of their affiliates) with respect to any and all matters relating to the marketing and/or development of the Condominium and with respect to the sales of units in the Condominium. ORAL REPRESENTATIONS CANNOT BE RELIED UPON AS CORRECTLY STATING THE REPRESENTATIONS OF THE DEVELOPER. FOR CORRECT REPRESENTATIONS, MAKE REFERENCE TO THIS BROCHURE AND TO THE DOCUMENTS REQUIRED BY SECTION 718.503, FLORIDA STATUTES, TO BE FURNISHED BY A DEVELOPER TO A BUYER OR LESSEE. These materials are not intended to be an offer to sell, or solicitation to buy a unit in the condominium. Such an offering shall only be made pursuant to the prospectus (offering circular) for the condominium and no statements should be relied upon unless made in the prospectus or in the applicable purchase agreement. In no event shall any solicitation, offer or sale of a unit in the condominium be made in, or to residents of, any state or country in which such activity would be unlawful. FOR NEW YORK RESIDENTS: THE COMPLETE OFFERING TERMS ARE IN A CPS-12 APPLICATION AVAILABLE FROM THE OFFEROR. FILE NO. CP19-0051. All plans, features and amenities depicted herein are based upon preliminary development plans, and are subject to change without notice in the manner provided in the offering documents. The photographs contained in this brochure may be stock photography or have been taken off-site and are used to depict the spirit of the lifestyle to be achieved rather than any that may exist or that may be proposed, and are merely intended as illustration of the activities and concepts depicted therein. Actual prices of units within the condominium may vary. Please contact Developer for accurate pricing information. The information provided herein regarding Coconut Grove was obtained from publicly available information and Developer makes no representations as to same. Certain information set forth herein includes timelines, completion dates, and other predictive and forward-looking statements (collectively, the “Projections”) that represent assumptions and expectations of Developer in light of currently available information. No representation or warranty, express or implied, is provided in relation to the fairness, accuracy, correctness, completeness or reliability of the Projections.



Developed by: 2701 Bayshore One Park Grove, LLC, 2665 South Bayshore Drive, Suite 1020, Coconut Grove, Florida 33133



one
park
grove

ONEPARKGROVE.COM



